

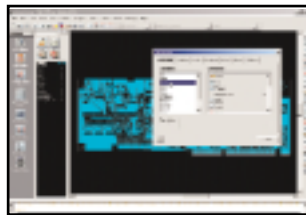


Improving PCB Success with Powerful CAM Software

CAM350 Release 8 delivers unprecedented usability and performance for the mainstream CAM marketplace with a variety of new features and performance updates. With CAM350 Release 8 PCB Designers and CAM Engineers are more productive than ever!

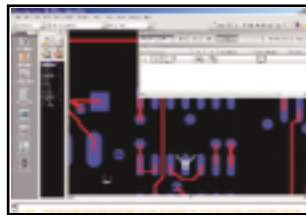
Unlike low-end CAM tools that lack the functionality to handle today's complex designs or high-end tools that are extremely expensive to own and maintain, CAM350 Release 8 is the price/performance leader for both the PCB design and PCB fabrication industries. CAM350 Release 8 includes a variety of performance, productivity, speed and quality enhancements to make it the best solution for today's design and fabrication challenges.

CAM350 Release 8 Highlights:



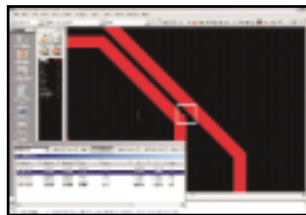
New Graphical User Interface (GUI)

- Customizable and dockable toolbars
- Standard and user created icons and hot buttons
- Enhanced mouse support and usability
- Easy navigation between editors
- New pan and zoom controls



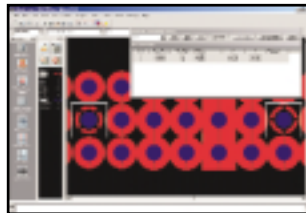
Graphical Netlist Comparison

Netlist Comparison is the key verification process between design and fabrication. Release 8 contains an enhanced netlist comparison process which allows the users to view errors graphically instead of producing text reports, reducing verification time.



Enhanced Error Verification

Create a sortable error report that is linked to the graphical display and view multiple errors or sort by feature size or error size, quickly verifying the results of any DRC or Analysis function.



Negative Plane Analysis

Identify potential connectivity errors such as isolated thermals, even when not completely cleared from copper as in the case of a manufacturer's etching process, by simulating the etch process.

Performance Enhancements

DFF errors are quickly identified and automatically repaired without user intervention and Barco Import, Polygon Pour, and the Graphical Display have been revamped and their speed increased 5 to 10X.

CAM350 Release 8 also includes enhancements to features such as Filtering Capabilities, Panel Editor Macro Capabilities, Report Sorting, Draw To Flash and Measure Net To Net as well as improved support for IPC-d-365A .

